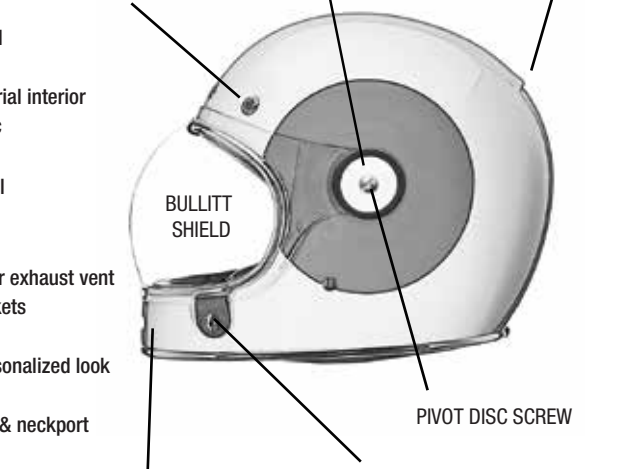


BELL**BULLITT**
INSTRUCTION MANUAL SUPPLEMENT*The Choice of Professionals***BULLITT** OVERVIEW**FEATURES**

- DOT approved
- Ultra low-profile fiber composite shell
- Multi density EPS liner
- Removable, washable and anti-bacterial interior
- Perforated micro suede interior fabric with leather trim
- Padded chin strap with stainless steel D-ring closure with leather pull tab
- 3 shell 3 EPS system
- 5 metal mesh intake vents with 1 rear exhaust vent
- 3D cut cheek pads with speaker pockets
- Magnefusion shield closure system
- Accessory shields available for a personalized look
- Industry-leading five-year warranty
- Rubber or chrome edging on eyepoint & neckport

**BULLITT** Shield Install

Follow these steps to install a Bullitt Flat or Bubble shield.



1. Remove left & right pivot discs & screws
(You can use a coin)



2. Located shield on the Pivot Disc



4. Install pivot disc screw and secure the pivot disc to helmet.



5. Now the Shield is installed on the Bullitt

3. Next put the Pivot Disc in place, the pin on the shield will be located into the slot on the pivot disc

BULLITT Shield Removal

Follow these steps to use your NEW Bullitt helmet with no shield.



1. Remove left & right pivot discs & screws
(You can use a coin)

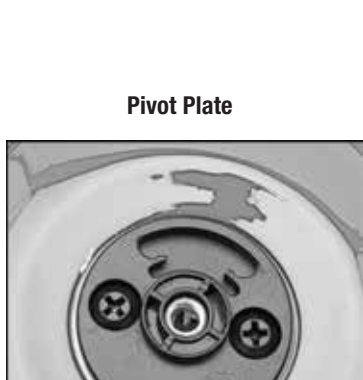


2. Remove the right pivot disc & screw
3. Repeat steps 1 & 2 for left side
4. Remove shield from helmet.
5. Now that the shield is off; the pivot discs will need to be installed back on the helmet in the No Shield position (flush mounted)

Pivot Disc

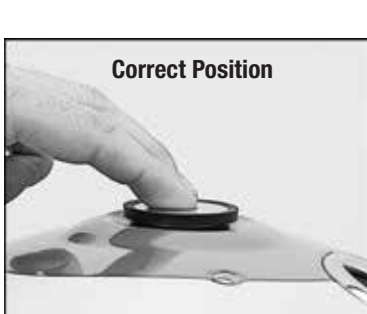
Pivot Plate Pin here

6. Be sure the right side pivot disc is used on the right of helmet and the left side pivot disc is used on left side helmet. The pivot discs are marked.

Pivot Plate

Pivot Plate Pin

7. There are two holes on the back of each pivot disc. The pin on pivot plate will need to be located in "NO SHIELD" position.

**Correct Position****Wrong Hole Position**

8. The Pivot disc will lay flat against the the black pivot disc, the gap should be minor.

Bell Powersports
5550 Scotts Valley Drive
Scotts Valley, Ca 95066
tel. 831-461-7500
fax. 381-461-7503

Customer Service
1001 Innovation Road
Rantoul, IL 61866
tel. 800-776-5677
fax. 800-888-9009



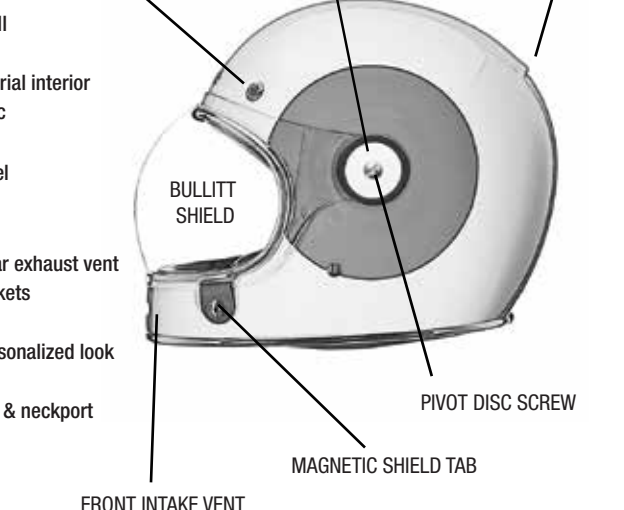
© EASTON-BELL SPORTS
www.bellhelmets.com
<https://www.facebook.com/BellPowersports>

BULLITT



FEATURES

- DOT approved
- Ultra low-profile fiber composite shell
- Multi density EPS liner
- Removable, washable and anti-bacterial interior
- Perforated micro suede interior fabric with leather trim
- Padded chin strap with stainless steel D-ring closure with leather pull tab
- 3 shell 3 EPS system
- 5 metal mesh intake vents with 1 rear exhaust vent
- 3D cut cheek pads with speaker pockets
- Magnefusion shield closure system
- Accessory shields available for a personalized look
- Industry-leading five-year warranty
- Rubber or chrome edging on eyepoint & neckport



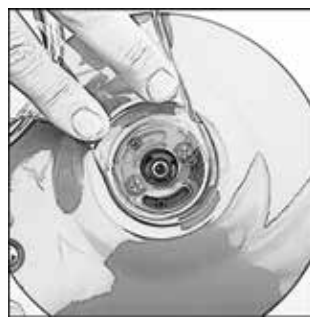
Follow these steps to install a Bullitt Flat or Bubble shield.



1. Remove left & right pivot discs & screws (You can use a coin)



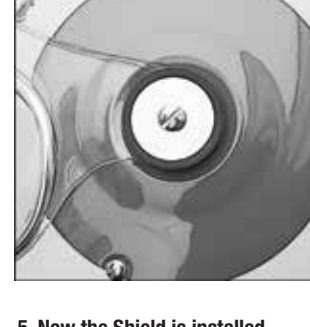
2. Located shield on the Pivot Disc



3. Next put the Pivot Disc in place, the pin on the shield will be located into the slot on the pivot disc

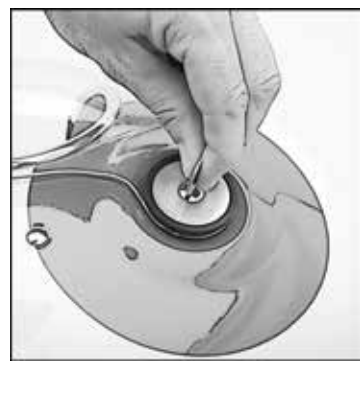


4. Install pivot disc screw and secure the pivot disc to helmet.

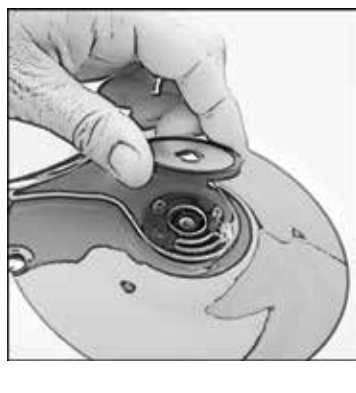


5. Now the Shield is installed on the Bullitt

Follow these steps to use your NEW Bullitt helmet with no shield.



1. Remove left & right pivot discs & screws (You can use a coin)



2. Remove the right pivot disc & screw
3. Repeat steps 1 & 2 for left side
4. Remove shield from helmet.
5. Now that the shield is off, the pivot discs will need to be installed back on the helmet in the No Shield position (flush mounted)

Pivot Disc

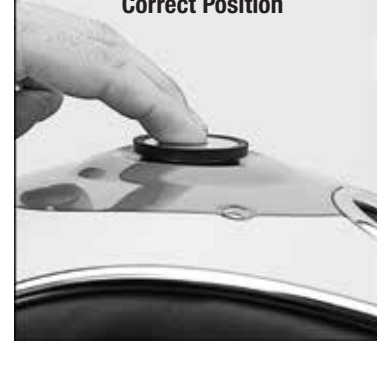


6. Be sure the right side pivot disc is used on the right of helmet and the left side pivot disc is used on left side helmet. The pivot discs are marked.

Pivot Plate



7. There are two holes on the back of each pivot disc. The pin on pivot plate will need to be located in "NO SHIELD" position.



8. The Pivot disc will lay flat against the the black pivot disc, the gap should be minor.

Bell Powersports
5550 Scotts Valley Drive
Scotts Valley, Ca 95066
tel. 831-461-7500
fax. 381-461-7503

Customer Service
1001 Innovation Road
Rantoul, IL 61866
tel. 800-776-5677
fax. 800-888-9009



© EASTON-BELL SPORTS
www.bellhelmets.com
<https://www.facebook.com/BellPowersports>

BULLITT