



**MODEL** KAWASAKI Z 1000

**YEAR** 2007-->

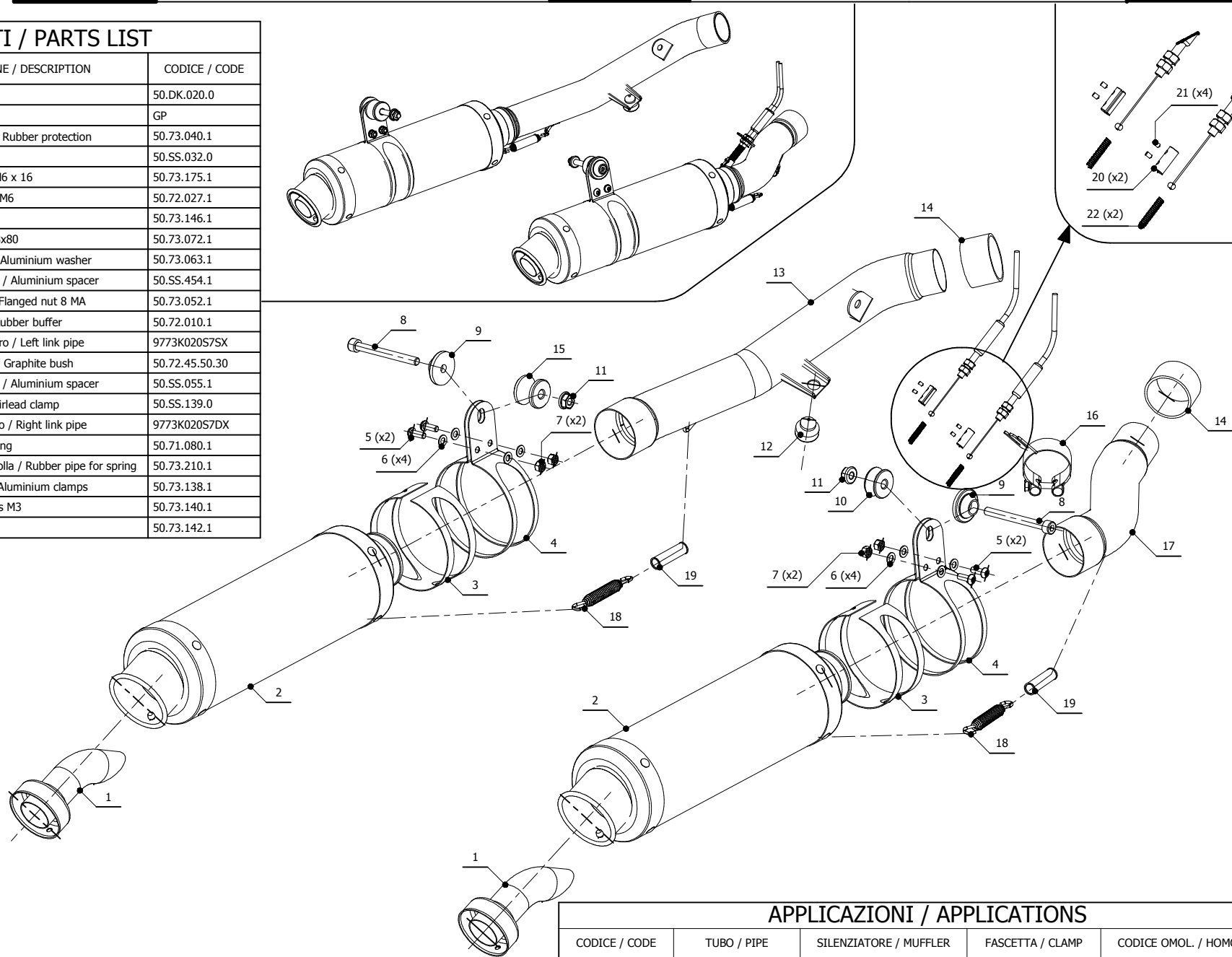
**LINE** SPORT

**MUFFLER** GP

**SCHEMATIC**

**ELENCO PARTI / PARTS LIST**

#	QTÀ / QTY	DESCRIZIONE / DESCRIPTION	CODICE / CODE
1	2	DB killer / DB killer	50.DK.020.0
2	2	Silenziatore / Muffler	GP
3	2	Protezione in gomma / Rubber protection	50.73.040.1
4	2	Staffa / Bracket	50.SS.032.0
5	4	Vite M6 x 16 / Screw M6 x 16	50.73.175.1
6	8	Rondella M6 / Washer M6	50.72.027.1
7	4	Dado M6 / Nut M6	50.73.146.1
8	2	Vite M8x80 / Screw M8x80	50.73.072.1
9	2	Rondella in alluminio / Aluminium washer	50.73.063.1
10	1	Distanziale in alluminio / Aluminium spacer	50.SS.454.1
11	2	Dado 8 MA flangiato / Flanged nut 8 MA	50.73.052.1
12	1	Gommino paracolpi / Rubber buffer	50.72.010.1
13	1	Tubo di raccordo sinistro / Left link pipe	9773K020S7SX
14	2	Guarnizione in grafite / Graphite bush	50.72.45.50.30
15	1	Distanziale in alluminio / Aluminium spacer	50.SS.055.1
16	1	Fascetta passacavi / fairlead clamp	50.SS.139.0
17	1	Tubo di raccordo destro / Right link pipe	9773K020S7DX
18	2	Molla lunga / Long spring	50.71.080.1
19	2	Tubo in gomma per molla / Rubber pipe for spring	50.73.210.1
20	2	Morsetti in alluminio / Aluminium clamps	50.73.138.1
21	4	Grani M3 / Grub screws M3	50.73.140.1
22	2	Molla / Spring	50.73.142.1



**APPLICAZIONI / APPLICATIONS**

CODICE / CODE	TUBO / PIPE	SILENZIATORE / MUFFLER	FASCETTA / CLAMP	CODICE OMOL. / HOMOL. CODE
K.020.L2S	INOX / ST. STEEL	CARBONIO / CARBON FIBER	INOX / ST. STEEL	ME029 e9 1221
K.020.L6S	INOX / ST. STEEL	TITANIO / TITANIUM	INOX / ST. STEEL	ME029 e9 1221