



MODEL BMW S 1000 RR

YEAR 2010-->

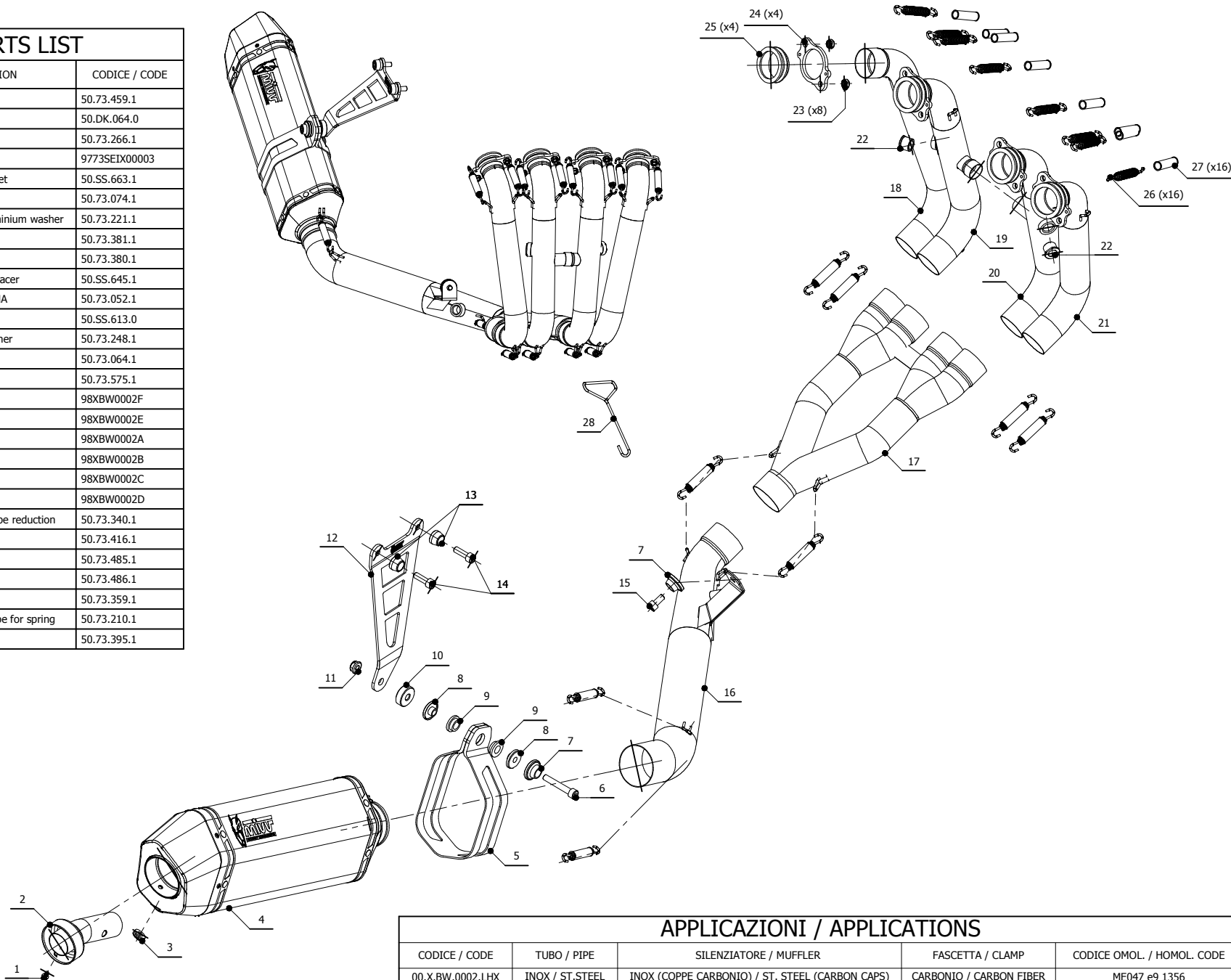
LINE POWER STEEL

MUFFLER SPEED EDGE

SCHEMATIC

ELENCO PARTI / PARTS LIST

#	QTÀ / QTY	DESCRIZIONE / DESCRIPTION	CODICE / CODE
1	1	Vite M5 x 8 / Screw M5 x 8	50.73.459.1
2	1	DB killer / DB killer	50.DK.064.0
3	1	Tappo in gomma / Rubber stopper	50.73.266.1
4	1	Silenziatore INOX / ST. STEEL muffler	9773SEIX00003
5	1	Staffa in carbonio / Carbon fiber bracket	50.SS.663.1
6	1	Vite M8x50 / Screw M8x50	50.73.074.1
7	2	Rondella in alluminio nera / Black aluminium washer	50.73.221.1
8	2	Boccola / Bush	50.73.381.1
9	2	Silentblock / Silentblock	50.73.380.1
10	1	Distanziale in alluminio / Aluminium spacer	50.SS.645.1
11	1	Dado 8 MA flangiato / Flanged nut 8 MA	50.73.052.1
12	1	Staffa / Bracket	50.SS.613.0
13	2	Rondella in alluminio / Aluminium washer	50.73.248.1
14	2	Vite M8x25 / Screw M8x25	50.73.064.1
15	1	Vite M8x16 / Screw M8x16	50.73.575.1
16	1	Tubo di raccordo / Link pipe	98XBW0002F
17	1	Tubo di raccordo 4-1 / Link pipe 4-1	98XBW0002E
18	1	Collettore #1 / Down pipe #1	98XBW0002A
19	1	Collettore #2 / Down pipe #2	98XBW0002B
20	1	Collettore #3 / Down pipe #3	98XBW0002C
21	1	Collettore #4 / Down pipe #4	98XBW0002D
22	2	Riduttore sonda lambda / Lambda probe reduction	50.73.340.1
23	8	Dado M7 / Nut M7	50.73.416.1
24	4	Flangia / Flange	50.73.485.1
25	4	Boccola / Bush	50.73.486.1
26	16	Molla media / Middle spring	50.73.359.1
27	16	Tubo in gomma per molla / Rubber pipe for spring	50.73.210.1
28	1	Tiramolla / Spring hook	50.73.395.1



APPLICAZIONI / APPLICATIONS

CODICE / CODE	TUBO / PIPE	SILENZIATORE / MUFFLER	FASCETTA / CLAMP	CODICE OMOL. / HOMOL. CODE
00.X.BW.0002.LHX	INOX / ST. STEEL	INOX (COPPE CARBONIO) / ST. STEEL (CARBON CAPS)	CARBONIO / CARBON FIBER	ME047 e9 1356