



Fitting Instruction

Article-No. : **110Y044 & 110Y044T**
Product : **Rear Set**
Manufacturer : **Yamaha**
Model : **V-max**

Important:

Read this instruction manual carefully and mind all warnings and tips. You should do this work only if you're qualified; otherwise we recommend this mounting to be done by a qualified workshop. Improperly mounting of this kit can reduce the driveability of the motorcycle and may be a risk to your health and life.

Special works are marked with the following signs. Please take special care on these works.



Warning! Important mounting instruction. It shows risks to your life and health.



Tips for mounting and maintenance or to avoid damage.

Fitting:

Remove stock rear sets. The following parts will be used for your new rear set: gearbox lever with ball joint and counternut, brake lever retain spring and brake light switch with its spring.



Rear sets are pre-assembled but all screws are not tightened! Always use locknuts or proper amount of medium thread-locking adhesive (e. g. Loctite 243). All details of assembling are shown on the backside drawing. All parts are welded into their bags as they belong together.

Remove original gearshift lever bracket and use attached screws M6x25 instead. The four plastic plugs can be used to close open threads in the frame and the passenger unit.



The pin of the side stand has to be bended down to get enough clearance for the gearshift lever.



The original brake-hose has to be exchanged. A brake-hose with 680mm length and fittings with 20° and 45° is required (LSL Article No.: 225BS68BC).

The tightening torques for connections to the frame refers to the manufacturers' instructions. Use the following torques for all the other screwing:

M5	=	6Nm	=	4.43lbf ft
M6	=	10Nm	=	7.38lbf ft
M8	=	20Nm	=	14.75lbf ft
M10x1,25	=	30Nm	=	22.13lbf ft



After installing rear set **test brake and gear shifting at low speed. If anything is not operating properly or braking efficiency is poor, testing at high speeds may result in death or serious injury!**

Maintenance:



Periodically proof all functions during service intervals. Use **particle free (no MoS₂)** lithium or barium soap grease to maintain lever bushings.

Mount brake cylinder with M8x20 and spacers (t=2mm) between brake cylinder and adaptor

Exchange original counternut to flat counternut M8

Mount fork head and pin of the push rod with new split pin

Mount brake lever as shown in separate drawing for peg adapter

Fit the spring-bracket bolt (l= 16mm) on the levers inside

Stay

Master brake cylinder

Brake cylinder adapter

Brake cylinder adapter mounted with M8x12 on the original brake cylinder bracket

Rotate brake light switch bracket 180° and fix it with M6x10 on the outside

Brake cylinder adapter mounted with M8x16 on the original brake cylinder bracket

Original retain spring

Fit the spring-bracket bolt (l= 16mm) on the stays outside

Brake Lever

Fix brake lever knob with countersunk M6x16

Mount stay with M12x1.25x120 and spacer (t=28mm)

Mount stay with M10x1.25x25 and spacer (t=5mm)

Screw bolt M6x40 into the original ball joint and fix it with Loctite, then mount and adjust gearshift rod with counternut. **An angle of 90° between gearbox lever and rod is recommended**

Gearshift lever

Fix gearshift lever knob with M6x16

Mount stay with M12x1.25x120 and spacer (t=35mm)

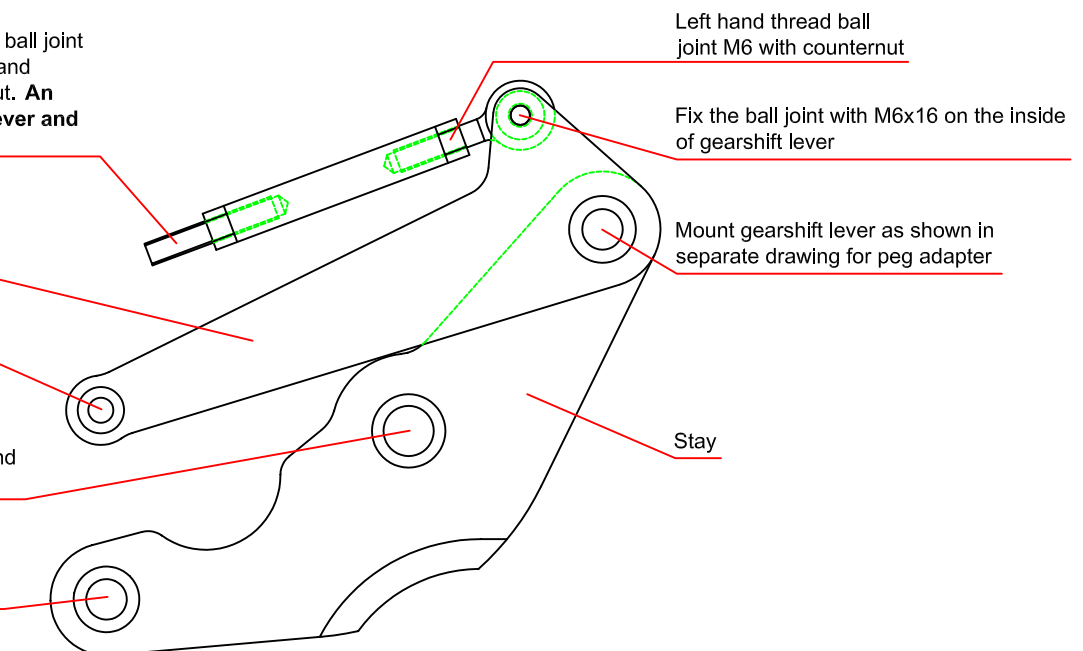
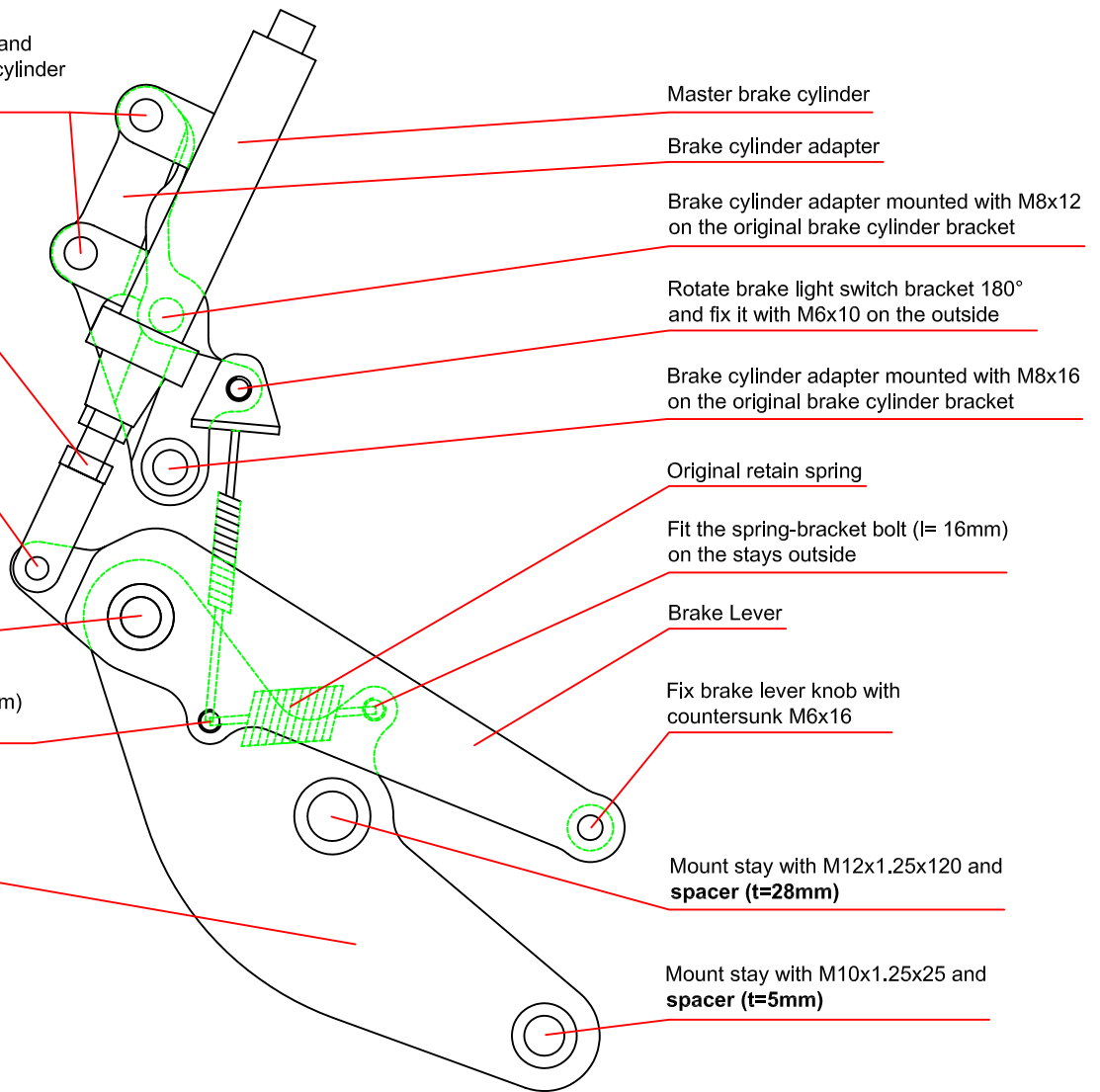
Mount stay with M10x1.25x25 and spacer (t=5mm)

Left hand thread ball joint M6 with counternut

Fix the ball joint with M6x16 on the inside of gearshift lever

Mount gearshift lever as shown in separate drawing for peg adapter

Stay



ULS M10x1.25x25

Schraubensicherung
mittelfest
z.B.: Loctite 243

medium thread
locking adhesive
e.g. Loctite 243

Grundplatte

Stay

Paßscheibe verwenden,
falls Hebel nicht
beweglich

If lever is blocked use
shim ring

Scheibe $\varnothing 25\text{mm}$

Washer $\varnothing 25\text{mm}$

Brems/ Schalthebel

Brake pedal/ Shifter

Scheibe $\varnothing 25\text{mm}$

Washer $\varnothing 25\text{mm}$

Fett

Grease

Klappbare/
starre Lagerung

Peg adapter / journal

