



## Fitting Instruction

Article-No. : 118Y089  
Product : Rear Set 2-Slide  
Manufacturer : Yamaha  
Model : YZF-R6 '03 →

### Important:

Read this instruction manual carefully and mind all warnings and tips. You should do this work only if you're qualified; otherwise we recommend this mounting to be done by a qualified workshop. Improperly mounting of this kit can reduce the driveability of the motorcycle and may be a risk to your health and life.

Special works are marked with the following signs. Please take special care on these works.



**Warning! Important mounting instruction. It shows risks to your life and health.**



**Tips for mounting and maintenance or to avoid damage.**

### Fitting:

Remove stock rear sets. The following parts will be used for your new rear set: gearbox lever with ball joint and counternut.



**Rear sets are pre-assembled but all screws are not tightened!** Always use locknuts or proper amount of medium thread-locking adhesive (e. g. Loctite 243). All details of assembling are shown on the backside drawing. All parts are welded into their bags as they belong together.



Replace the original brake light switch by a hydraulic one. It replaces the banjo bolt of the brake hose at the brake cylinder. **This is the highest point in the brake-system, proof proper air free installation!**

The tightening torques for connections to the frame refers to the manufacturers' instructions. Use the following torques for all the other screwing:

<b>M5</b>	<b>=</b>	<b>6Nm</b>
<b>M6</b>	<b>=</b>	<b>10Nm</b>
<b>M8</b>	<b>=</b>	<b>20Nm</b>
<b>M10x1,25</b>	<b>=</b>	<b>30Nm</b>



After installing rear set **test brake and gear shifting at low speed. If anything is not operating properly or braking efficiency is poor, testing at high speeds may result in death or serious injury!**

### Maintenance:



Periodically proof all functions during service intervals. Use **particle free (no MoS<sub>2</sub>)** lithium or barium soap grease to maintain lever bushings.

Mount hydraulic brake light switch on master brake cylinder

Master brake cylinder

Original counternut M8

Mount ball joint instead of the original fork head at the push rod. To reach a deep lever position it may be necessary to shorten the push rod

Screw in M80x40 from lever outside and mount bushing (t=12mm) and ball joint on the inside with flat locknut M8

Mount brake lever as shown in separate drawing for peg adapter

Fit the spring-bracket bolt (l=24,5 mm)

New retain spring

Fit the spring-bracket bolt (l= 16mm)

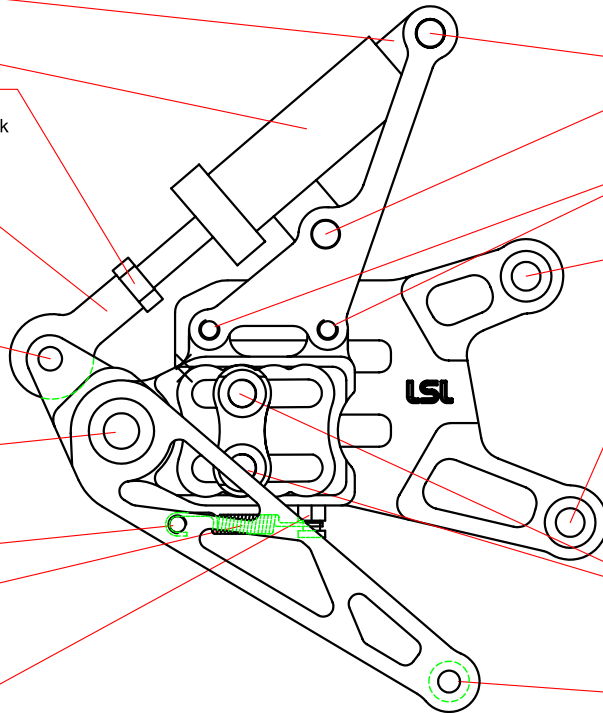
Screw in M8x35 from outside and mount brake cylinder on the inside with flat locknut from behind

Brake cylinder adapter mounted with M6x16 on the outside

Mount stay with original screws  
Tightening torque: 39Nm

2x screws M8x25

Fix brake lever knob with countersunk M6x16



Rear Set 2-Slide  
Yamaha YZF-R6 '03-  
Fitting instruction brake side

Use the original gearbox lever, ball joint and counternut. Dismount gearbox lever and mount it reversed so that the lever arm faces to the outside

Use the attached spacers 1 x 20mm or 1 x 10mm for your individual position

Left hand thread ball joint M6 with counternut

Fix the ball joint with M6x18 and spacer (t=1,5mm) on the inside of gearshift lever

Mount gearshift lever as shown in separate drawing for peg adapter

Fix gearshift lever bracket with M10x1,25x70 and spacer (t=31mm) on the mounting device of the side stand  
**Tightening torque: 35Nm**

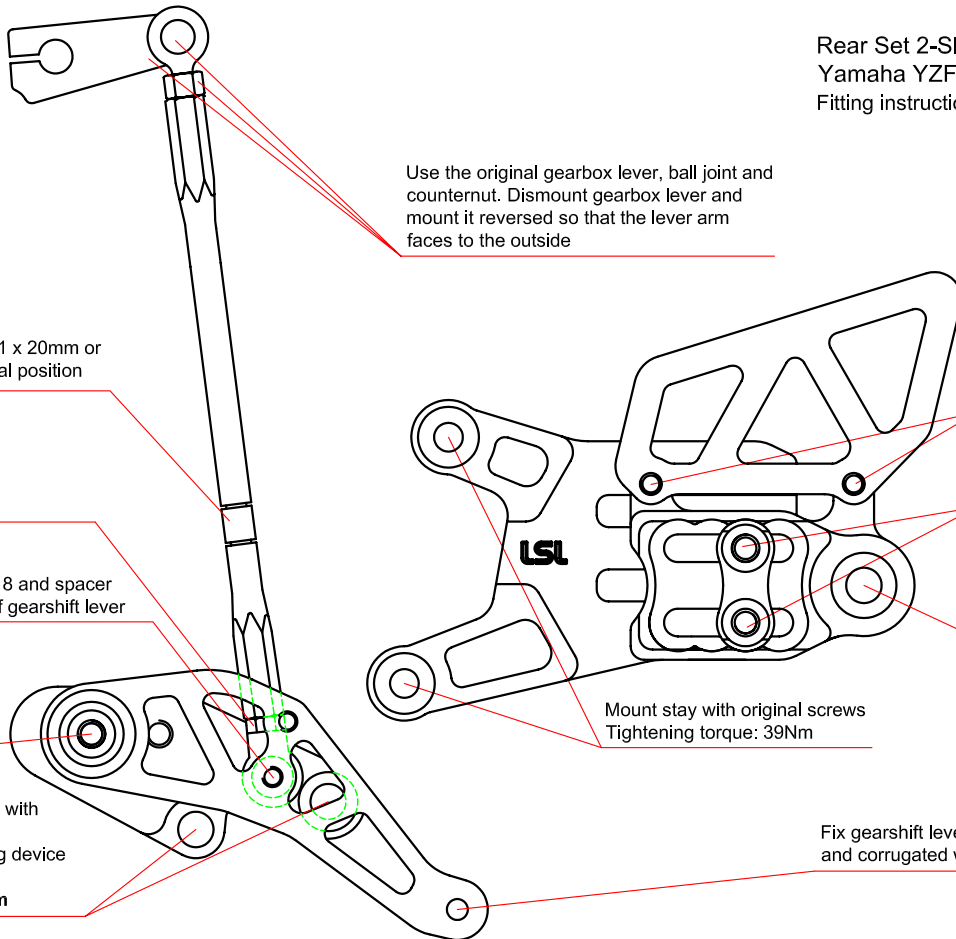
Mount the heel protector with M6x8 on the stays outside

2x screws M8x25

Mount peg adapter and bushing as shown in separate drawing for peg adapter

Mount stay with original screws  
Tightening torque: 39Nm

Fix gearshift lever knob with M6x18 and corrugated washer

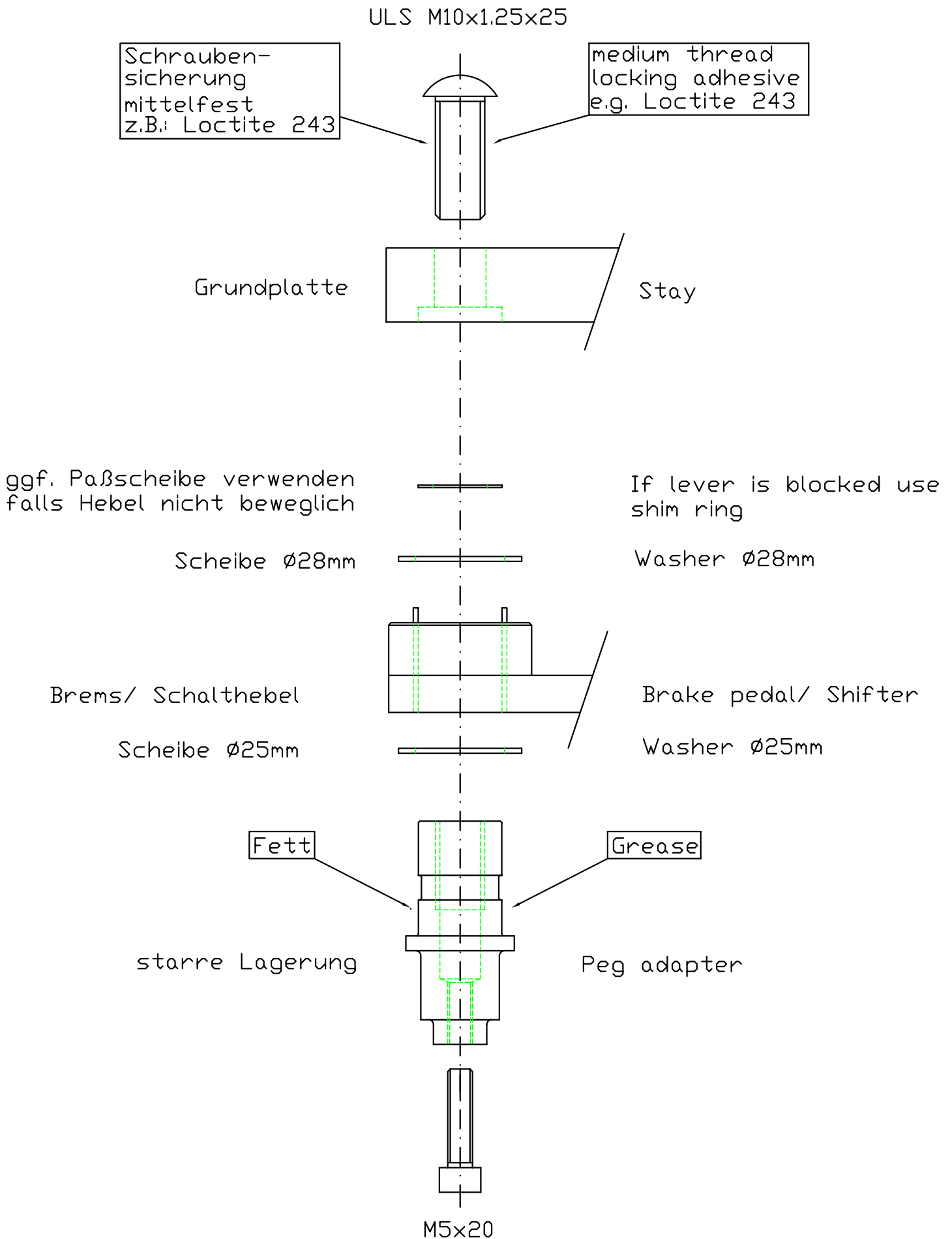


Rear Set 2-Slide  
Yamaha YZF-R6 '03-  
Fitting instruction gearshift side

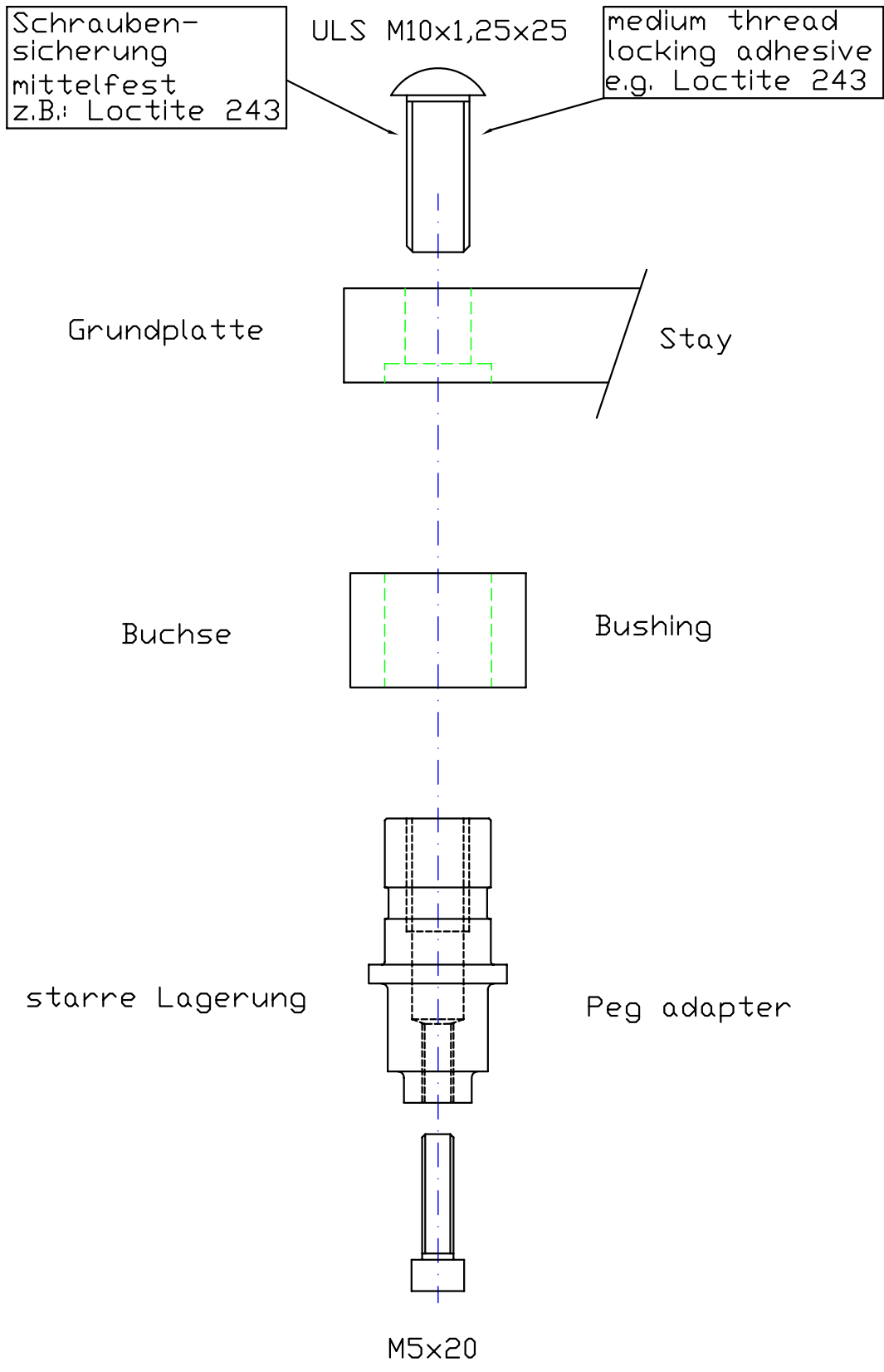
**Important mounting instruction:**

To get the side stand in a hinged position you have reverse the retain spring 180° in the longitudinal axle

# Rechte Seite / Right side



Linke Seite / Left side



Linke Seite vorne / left front side

