



# Fitting Instruction

Article-No. : 118K131  
Product : **Adjustable Rear Set**  
Manufacturer : **Kawasaki**  
Model (Type) : **ZX-6R (ZX600R) 2009 →**

## Important:

Read this instruction manual carefully and mind all warnings and tips. You should do this work only if you're qualified; otherwise we recommend this mounting to be done by a qualified workshop. Improperly mounting of this kit can reduce the driveability of the motorcycle and may be a risk to your health and life.

Special works are marked with the following signs. Please take special care on these works.



**Warning! Important mounting instruction. It shows risks to your life and health.**



**Tips for mounting and maintenance or to avoid damage.**

## Fitting:

Remove stock rear sets. The following parts will be used for your new rear set: gearbox lever with ball joint, rear master brake cylinder and bolts to fix the stay.



**Rear sets are pre-assembled but all screws are not tightened!** Always use locknuts or proper amount of medium thread-locking adhesive (e. g. Loctite 243). All details of assembling are shown on the backside drawing. All parts are welded into their bags as they belong together.



The original brake light switch has to be replaced by a hydraulic one. It replaces the banjo bolt that fixes the brake hose on the brake cylinder. **This is the highest point in the brake-system, proof proper air free installation! Use only seal rings according to the brake hose manufactures' instructions.**



**The original brake-hose has to be exchanged.** Use the attached hose and connect the sideward bended fitting to the calliper. Fix the other fitting on the master cylinder so the hose leads upward. Use attached rubberized clamp to fit the hose on swing arm, equal to the original mounting.

The tightening torques for connections to the frame refers to the manufacturers' instructions. Use the following torques for all the other bolted connections:

<b>M5</b>	<b>=</b>	<b>6Nm</b>	<b>=</b>	<b>4.43lbf ft</b>
<b>M6</b>	<b>=</b>	<b>10Nm</b>	<b>=</b>	<b>7.38lbf ft</b>
<b>M8</b>	<b>=</b>	<b>20Nm</b>	<b>=</b>	<b>14.75lbf ft</b>
<b>M10x1.25</b>	<b>=</b>	<b>30Nm</b>	<b>=</b>	<b>22.13lbf ft</b>

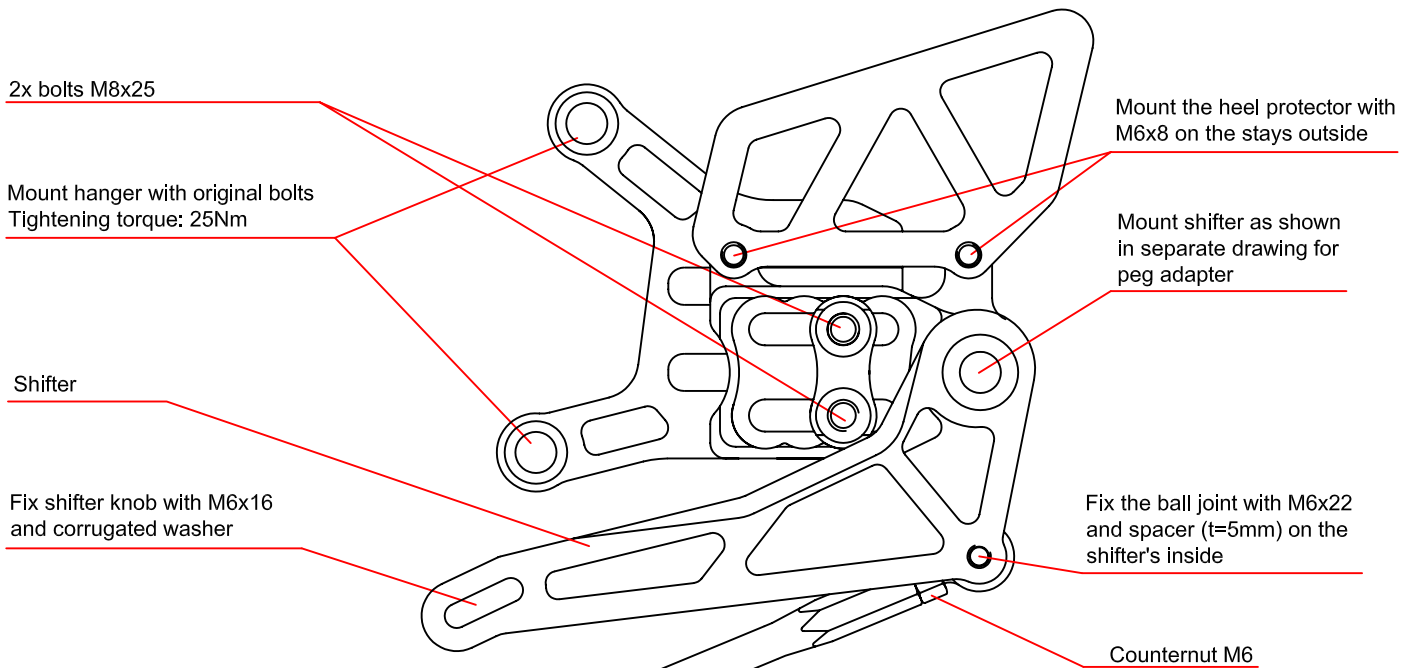
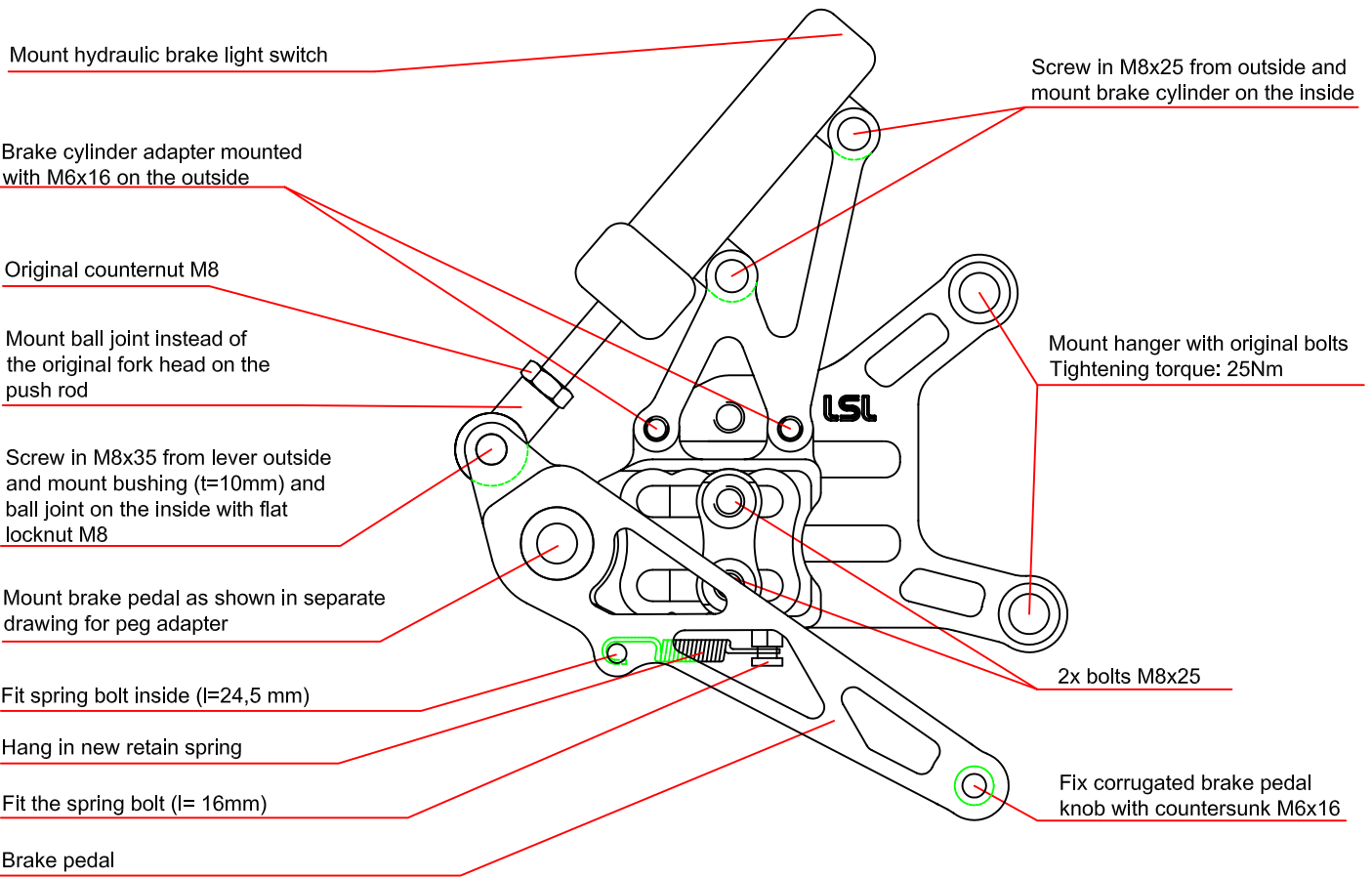


**Test brake and gear shifting indoor** after installing rear set. **If anything is not operating properly or braking efficiency is poor, testing on the road may result in death or serious injury!**

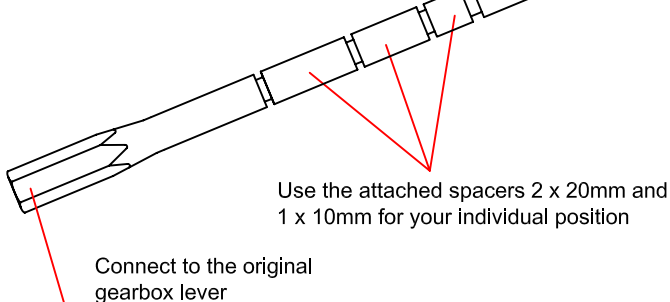
## Maintenance:



Periodically proof all functions during service intervals. Use **particle free (no MoS<sub>2</sub>)** lithium or barium soap grease to maintain lever bushings.



**Advice for reversed shifting:** The LSL gear-box lever can be ordered separately



Adjustable Rear-Set  
Kawasaki ZX-6R '09 -

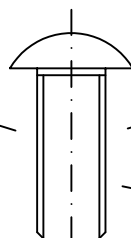
LSL-Motorradtechnik, 25.11.2009

ULS M10x1.25x25

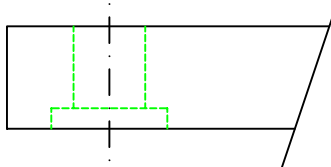
Schrauben-  
sicherung  
mittelfest  
z.B.: Loctite 243

prod. blocage  
de sécurité  
p.ex. Loctite 243

medium thread  
locking adhesive  
e.g. Loctite 243



Grundplatte

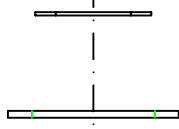


Plaque de fixation  
Hanger

ggf. Paßscheibe verwenden  
falls Hebel nicht beweglich

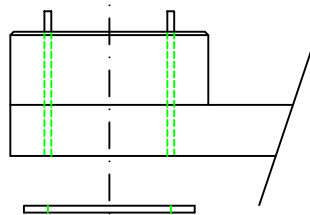
Utilisez rondelle de calage si  
le levier n'est pas mobile  
If lever is blocked use  
shim ring

Scheibe  $\varnothing 28\text{mm}$



Rondelle / Washer  $\varnothing 28\text{mm}$

Brems- / Schalthebel



Sélecteur/pédale frein  
Brake pedal/ Shifter

Scheibe  $\varnothing 25\text{mm}$

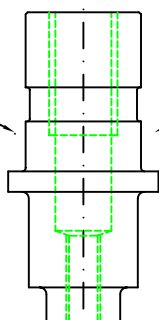
Rondelle / Washer  $\varnothing 25\text{mm}$

Fett

Graisse / Grease

starre Lagerung

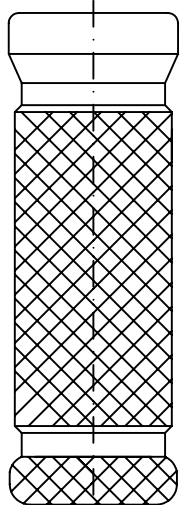
Axe de fixation  
Journal



Fußraste

Footpeg

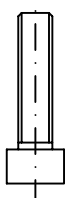
Support de pieds



Schrauben-  
sicherung  
mittelfest  
z.B.: Loctite 243

prod. blocage  
de sécurité  
p.ex. Loctite 243

medium thread  
locking adhesive  
e.g. Loctite 243



M5x25