



Fitting Instruction

Part-No. : 118K127
Product : Rear Set "2-Slide"
Vehicle manufacturer : Kawasaki
Model : ZX-10R 2008 →

Important:

Read this instruction manual carefully and mind all warnings and tips. You should do this work only if you're qualified; otherwise we recommend this mounting to be done by a qualified workshop. Improperly mounting of this kit can reduce the driveability of the motorcycle and may be a risk to your health and life.

Special works are marked with the following signs. Please take special care on these works.



Warning! Important mounting instruction. It shows risks to your life and health.



Tips for mounting and maintenance or to avoid damage.

Fitting:

Remove stock rear sets. The following parts will be used for your new rear set: Gearbox lever with its ball joint and counternut.



Rear sets are pre-assembled but all screws are not tightened! Always use locknuts or proper amount of medium thread-locking adhesive (e. g. Loctite 243). All details of assembling are shown on the backside drawing. All parts are welded into their bags as they belong together.



The original brake light switch has to be replaced by a hydraulic one. It replaces the banjo bolt that fixes the brake hose on the brake cylinder. **This is the highest point in the brake-system, proof proper air free installation! Use only seal rings according to the brake hose manufactures' instructions.**

The tightening torques for connections to the frame refers to the manufacturer's instructions. Use the following torques for all the other bolted connections:

M5	=	6Nm	=	4.43lbf ft
M6	=	10Nm	=	7.38lbf ft
M8	=	20Nm	=	14.75lbf ft
M10x1,25	=	30Nm	=	22.13lbf ft



After installing rear set **test brake and gear shifting indoor. If anything is not operating properly or braking efficiency is poor, testing on the road may result in death or serious injury!**

Maintenance:



Periodically proof all functions during service intervals. Use **particle free (no MoS₂)** lithium or barium soap grease to maintain lever bushings.

Mount hydraulic brake light switch on master brake cylinder

Mount screws M8x25 from outside with original heel protector and fix brake cylinder on the inside

Fix bracket and plastic cover as original. For some positions it is necessary to make a cut into the plastic cover.

Brake cylinder adapter mounted with M6x16 on the outside

Bracket mounted with M5x10 on the inside of hanger

2x screws M8x25

Mount hanger with M8x20 Tightening torque: 25Nm

Brake cylinder adapter

Original counter nut M8

Mount ball joint instead of the original fork head on the push rod. To reach a deep lever position it may be necessary to shorten the push rod

Screw in M8x35 from lever outside and mount bushing (t=10mm) and ball joint on the inside with flat locknut M8

Mount brake lever as shown in separate drawing for peg adapter

Fit the spring bolt (l=24,5 mm)

New retain spring

Fit the spring bolt (l= 16mm)

Fix brake lever knob with countersunk M6x16

2x screws M8x25

Mount hanger with M8x20 Tightening torque: 25Nm

Mount the heel protector with M6x8 on the stays outside

Mount gearshift lever as shown in separate drawing for peg adapter

Fix gearshift lever knob with M6x16 countersunk

Fix the ball joint with M6x16 on the inside of gearshift lever

Counter nut

Use the original gearbox lever, ball joint and counter nut

Use the attached spacers 2 x 20mm and 1 x 10mm for your individual position

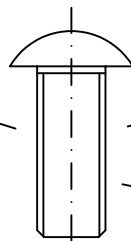
2-Slide Rear Set Kawasaki ZX-10R '08 -

ULS M10x1.25x25

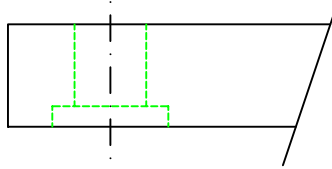
Schrauben-
sicherung
mittelfest
z.B.: Loctite 243

prod. blocage
de sécurité
p.ex. Loctite 243

medium thread
locking adhesive
e.g. Loctite 243



Grundplatte

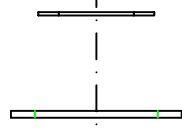


Plaque de fixation
Hanger

ggf. Paßscheibe verwenden
falls Hebel nicht beweglich

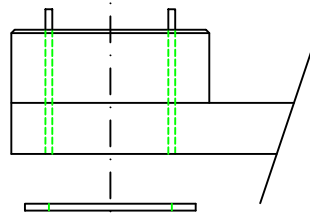
Utilisez rondelle de calage si
le levier n'est pas mobile
If lever is blocked use
shim ring

Scheibe Ø28mm



Rondelle / Washer Ø28mm

Brems- / Schalthebel



Sélecteur/pédale frein
Brake pedal/ Shifter

Scheibe Ø25mm

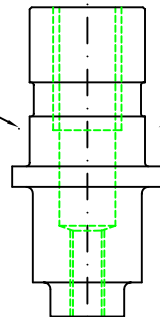
Rondelle / Washer Ø25mm

Fett

Graisse / Grease

starre Lagerung

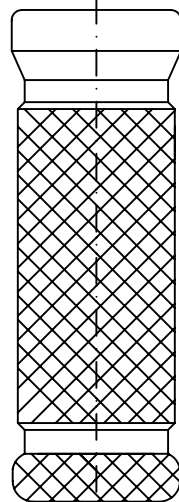
Axe de fixation
Journal



Fußraste

Footpeg

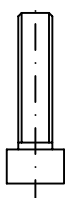
Support de pieds



Schrauben-
sicherung
mittelfest
z.B.: Loctite 243

prod. blocage
de sécurité
p.ex. Loctite 243

medium thread
locking adhesive
e.g. Loctite 243



M5x25