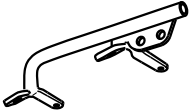
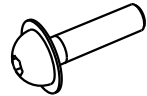
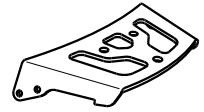
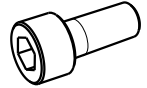







GPT.08.269.100

ALU-RACK Kawasaki ZZR 1200



<p>1 Haltegriff Handlebar</p>  <p>GPT.08.269.910/L/R Anzahl/ Pcs. 2</p>	<p>5 Linsenschraube Lenshead</p>  <p>M8 x 35 ISO 7380 Anzahl/ Pcs. 4</p>	<p>9 ALU-RACK</p>  <p>GPT.08.269.001 Anzahl/ Pcs. 1</p>
<p>2 Zylinderschraube mit Innensechskant Hexagon Socket Screw</p>  <p>M8 x 20 DIN 912 Anzahl/ Pcs. 4</p>	<p>6 Distanzbuchse Spacer</p>  <p>Da=20 Di=8,4 h=15 Anzahl/ Pcs. 4</p>	
<p>3 Unterlegscheibe Washer</p>  <p>A 8,4 DIN 125 Anzahl/ Pcs. 4</p>	<p>7 Mutter mit Bund Nut</p>  <p>M 8 DIN 6927 Anzahl/ Pcs. 4</p>	
<p>4 Distanzbuchse Spacer</p>  <p>Da=20 Di=8,4 h=5 Anzahl/ Pcs. 4</p>	<p>8 Rahmenendkappen Plastic Cap</p>  <p>GPN 320 20 Anzahl/ Pcs. 2</p>	

Montagehinweise

Alle vom Motorrad gelösten Schrauben sind gemäß Herstellerangaben wieder zu montieren, oder mit von SW-MOTECH gelieferten Schrauben zu ersetzen. Falls nicht anderweitig definiert, diese Schrauben nach Tabelle anziehen.

M6	9,6 Nm
M8	23 Nm
M10	46 Nm

Gegebenenfalls Schrauben mit flüssiger Schraubensicherung einkleben.

Prüfen Sie nach 50km alle Verbindungen auf festen Sitz.

Maximale Zuladung der Koffer :
Gemäß Herstellerangaben

Mounting instructions

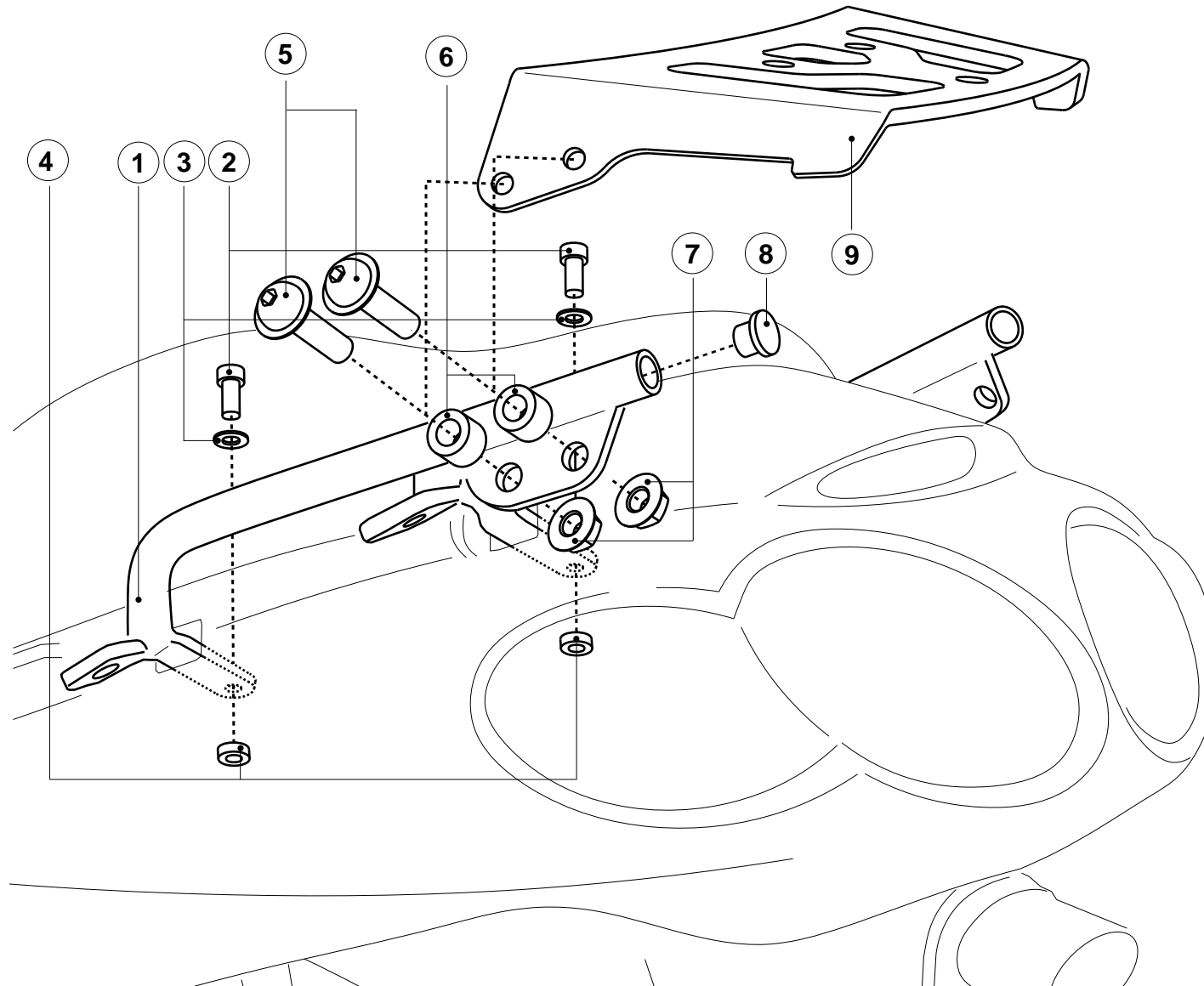
SW-MOTECH products should be installed by a qualified, experienced motorcycle technician. If you are unsure of your ability to properly install a product, please have the product installed by your local motorcycle dealer. SW-MOTECH takes no responsibility for damages caused by improper installation.

All screws, bolts, and nuts, including all replacement hardware provided by SW-MOTECH, should be tightened to the torque specified in the OEM maintenance manual for your motorcycle. If no torque specifications are provided in the OEM maintenance manual, the following torques may be used:

M6	9,6 Nm
M8	23 Nm
M10	46 Nm

All screws, bolts, and nuts should be checked after driving the first 50 km to ensure that all are tightened to the proper torque.

Medium strength liquid thread-locker (i.e., "Locktite") should be used to secure all screws, bolts, and nuts.



SW-MOTECH GmbH & Co. KG
Bahnhofstr. 44 d
35282 Rauschenberg
-Germany-

Tel.: ++ 49 (0) 6425 820 280
Fax: ++ 49 (0) 6425 820 281

www.sw-motech.com