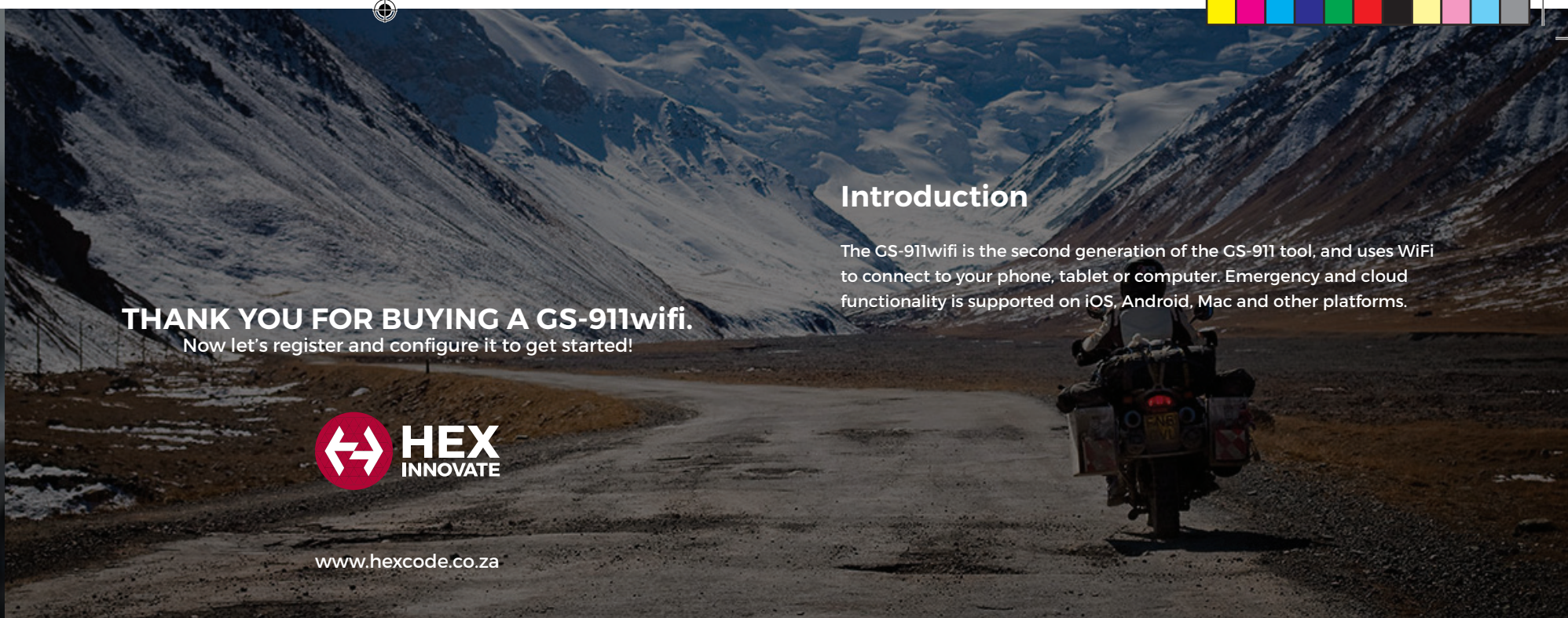




GS-911wifi
Diagnostic tool for BMW motorcycles



Introduction

The GS-911wifi is the second generation of the GS-911 tool, and uses WiFi to connect to your phone, tablet or computer. Emergency and cloud functionality is supported on iOS, Android, Mac and other platforms.

THANK YOU FOR BUYING A GS-911wifi.
Now let's register and configure it to get started!



www.hexcode.co.za

1 Ready-to-start checklist

To register and configure your GS-911wifi device, ensure you have the following:

- ▶ The GS-911wifi device, connected to your PC or Mac using the supplied USB cable.
- ▶ An internet connection on your Mac or PC.
- ▶ The GS-911wifi Utility application - downloaded, installed and running. (See step 2)

2 Download the GS-911wifi PC/ Mac Utility

Go to www.hexcode.co.za and proceed to the DOWNLOADS page. Download and install the GS-911wifi Utility for Mac or Windows. This utility can register your device, update your device and configure the WiFi connection used by your device.

We also have GS-911wifi Launcher apps for iOS and Android on the iTunes App store and Google Play store. You can find the mobile app by searching for "GS-911wifi".



Download it here:
▶ www.hexcode.co.za/downloads

3 Register your GS-911wifi

The life of every GS-911wifi device starts with registration. This activates your device, and requires an internet connection on your PC or Mac.

STEP 1:

After you have installed the GS-911wifi Utility, open this application. Now connect your GS-911wifi device to any open USB port. This will power your GS-911wifi device and the utility app should detect it shortly, displaying its serial number. Click the [device registration] button. This opens the registration page in your browser.

STEP 2:

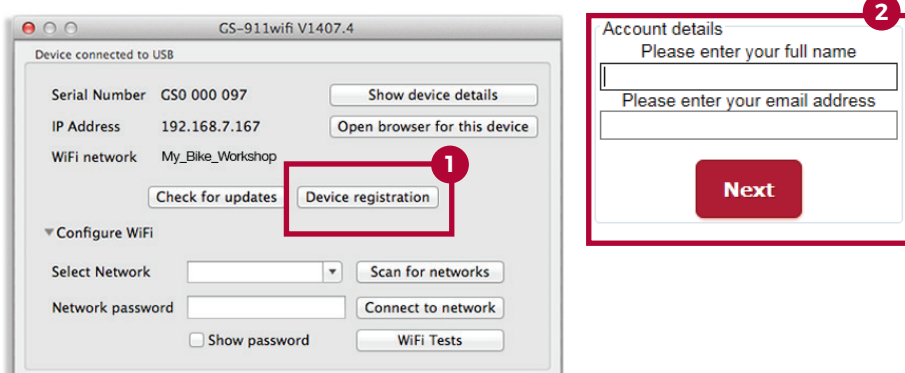
Submit your full name and email address. These details are required for support and warranty purposes. Please ensure you use a valid email address, as a confirmation email will be sent to complete the process.

STEP 3:

Check your email inbox - once you receive your GS-911wifi registration email, click on the validation link in the body of the email.

Note: It may take several minutes to an hour to receive the registration email. This is out of our control and depends on your email server and Spam settings. If you have still not received the email after waiting one hour, please check your spam folder and settings. Re-attempt the registration process and check that your email address is correct. If you still do not receive an email after these steps, please contact us at support@hexcode.co.za.

See the screenshot below for easy reference.



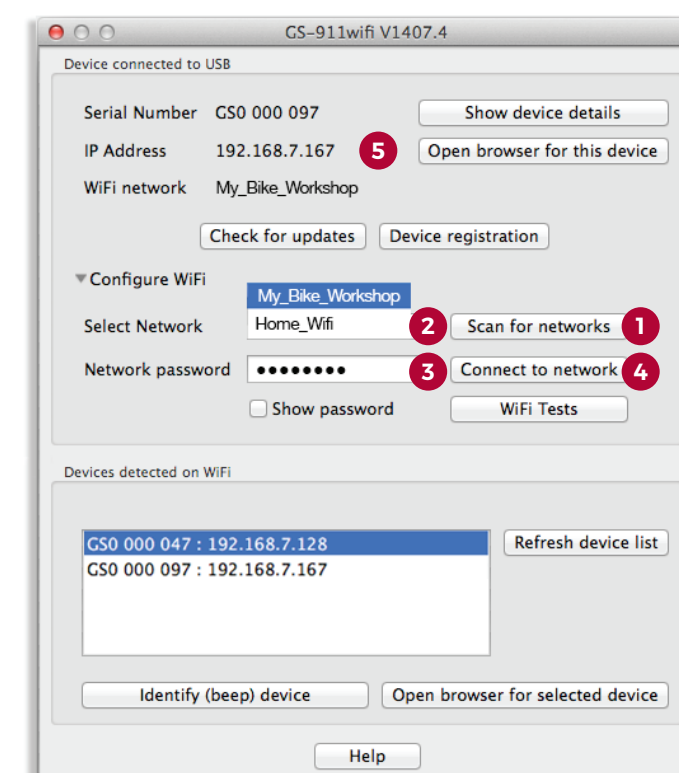
4 Configure your GS-911wifi

Make sure your GS-911 is connected to an open USB port on your PC or Mac. On the GS-911wifi Utility app window, expand the [Configure WiFi] section.

Click the (1) [Scan for networks] button. It will list all the (2) WiFi networks that have been found in the range of your GS-911wifi device. Select your network SSID and enter the (3) WiFi network password, then click the (4) [Connect to network] button to join this network. The top section of the GS-911wifi Utility will show the WiFi network to which your device is connected.

(5) **Note:** The devices detected on WiFi section, shown below, will display the serial and IP numbers of all connected GS-911wifi devices. Click the [Refresh device list] button to see an updated list. Then select the device and open the browser.

See the screenshot below for easy reference.



5 How do I plug it into my bike?

EU4 compliant BMW motorcycles have a 16-pin diagnostic connector (OBD plug) to which your GS-911 connects.

Normally, this connector is covered and located under the seat, but location may vary between models.



6 GS-911 Windows PC application

GS-911 is a Windows PC-based diagnostic tool for BMW motorcycles. The GS-911 Windows PC application provides the complete set of service functions. Use the GS-911 Downloader utility, available on www.hexcode.co.za/downloads to download and install the latest GS-911 Windows PC software.

NOTE: Some service functionality is available on the HEX Cloud. This is an ever-growing sub-set of the full service functionality offered in the Windows PC application. Please see the function chart for the latest functionality.



7 Using iOS and Android devices

1. Search for GS-911wifi on Google Play or the iTunes App Store and install.
2. Ensure your mobile device and GS-911wifi are on the same WiFi network.
3. Use the GS-911wifi Launcher app and start browsing your bike.

WHEN YOU ARE OFF THE BEATEN TRACK:

1. Switch your GS-911wifi interface to D2D mode.
2. Connect your mobile device to the WiFi network starting with "GS911".
3. Use the GS-911wifi Launcher app and start browsing your bike.



8 Cloud functionality

Most service functionality is available in the cloud functionality of MAC, iOS and Android.

9 Explore your GS-911wifi

Carry out an AutoScan with your GS-911wifi as a first diagnostic task.

Visit our YouTube channel or www.hexcode.co.za/video for various instructional videos.

The GS-911wifi



The flashing lights

POWER/STATUS LED	WIFI INFRASTRUCTURE STATUS LED	WIFI DEVICE-TO-DEVICE (D2D) STATUS LED
<ul style="list-style-type: none"> Device is booting: 5 Green flashes/sec Normal operation: 2 Green flashes/sec Low power mode: Green flashes every 2 secs Boot failure: Continuous red 	<ul style="list-style-type: none"> Scanning for WiFi networks: Flashing red Connecting to WiFi network: Continuous red Connected & waiting for IP: Flashing green Successfully connected to WiFi: Continuous green 	<ul style="list-style-type: none"> Device-to-device mode activated: Single red flash Device-to-device mode ready: Continuous green

Functionality modes and updates

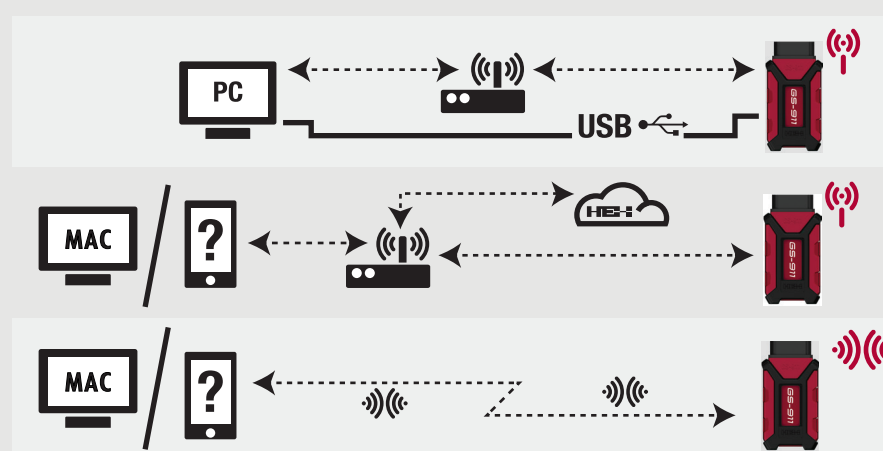
Service functionality includes the ability to reset service reminders, output tests, calibrations, ABS bleed tests, clear and relearn adaptations and much more. Available with the GS-911 Windows PC application.

Cloud functionality is introduced in a staged manner, aiming to provide the same service functionality that is found within the Windows PC application, on any platform (Mac, Linux, iOS, & Android).

Emergency functionality is embedded into the GS-911wifi unit. It allows the user to view the ECU information, read and clear fault codes on all control units, as well as view real-time sensor values for all engine control units.

Software updates are performed via the internet and include regular functionality, new motorcycle models and latest fault code database updates.

Functionality and infrastructure



Service	Cloud	Emergency	Updates
Windows GS-911 PC app + WiFi infrastructure or USB + Internet	+	+	+
Any device with browser + WiFi infrastructure + Internet	+	+	+
Any device with WiFi & browser, i.e. phones & tablets	+	+	+