

# Operating instructions



## Louis™ lift stick, order no. 10003338

We would like to congratulate you on purchasing the Louis lift stick, a practical, transportable rear wheel jacking up aid for motorcycles. The lift stick was designed for vehicles without a centre stand, in order to lift the rear wheel from the ground or to rotate it while lubricating the chain or measuring the free play of the drive chain. The lift stick is not suitable for removing the rear wheel or carrying out other repairs on the vehicle after lifting. Due to the leverage, the lift stick is not appropriate for choppers with extremely protruding side stands. The lift stick may only be used on suitable rear swingarms. Please observe the following operating and safety instructions, in order to assure a safe handling of the lift stick.

### Use:

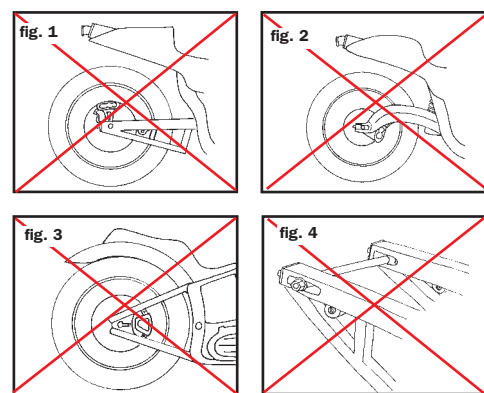
At first check whether the vehicle to be jacked up is suitable for the lift stick in terms of weight and the design of the rear swingarm, as described in the safety information. Place the motorcycle on an even, stable ground (grass, loose soil or sand do not represent suitable surfaces). Swing out the side stand of the machine and additionally secure it against unintentional retracting with a tension belt (not included in the delivery), if possible. Lock the hand brake by placing the strap included in the delivery around the handlebar and the brake lever, and carefully tightening it. In this way the motorcycle is secured against rolling. Apply the lift stick to the swingarm with the V-shaped rubber pad. Additionally protect the surface of your swingarm by means of a cloth, if applicable. Hold the lift stick in position and turn the spindle in the "Up" direction, until the lift stick foot touches the ground. Once again check the safe standing of your vehicle. Subsequently lift it from the ground by turning the spindle in the "Up" direction a little further.

### Attention:

Only lift the motorcycle from the ground just enough to enable the rotating of the rear wheel. The further you lift the rear wheel, the less stable the vehicle rests on the side stand. In case of improper use of the lift stick, the motorcycle could tip over the side stand and overturn. Now spray suitable chain lubricant onto the lower chain run, while turning the wheel bit by bit. In order to check the equability of the drive chain free play, turn the wheel around completely and use one finger to lift the chain against the swingarm on several positions. The free play in the centre of the lower chain run may not exceed the service limits of the drive chain. In the case of a clearly uneven free play, the chain and/or sprockets should be exchanged, in order to avoid damages to the transmission sprocket shaft and to re-establish full driving safety. After completing the works, hold the lift stick in position with one hand and slowly turn the spindle in the direction of "Down". Carefully remove it from the vehicle, in order not to damage the swingarm. Also remove the tension belt from the side stand, if applicable.

### Safety information:

- The lift stick has been tested for a maximum direct bearing capacity of 100 kg. Do not use it for higher bearing loads. On the motorcycle, the bearing load at the swingarm usually amounts to half of the weight of the vehicle.
- The lift stick is applied to the rear swingarm of the vehicle. To fully carry the motorcycle, the swingarm must plunge into the V-shaped, rubber retainer. The swingarm may not be positioned on the vehicle in a severe angle, either. This is why the jack is not suitable for "superbike swingarms" with lower struts (fig. 1), for "banana shaped" swingarms (fig. 2) and for triangular swingarms (fig. 3 resp. 4)!



- Make sure that no brake lines or brake linkage is disconnected resp. bent from using the lift stick.
- Only use the lift stick on a stable, completely even ground, however never directly on loose sand, soft soil or the like.
- Only lift the vehicle just enough from the ground to enable the turning of the wheel. Never sit on the jacked up vehicle.
- Do not use the lift stick for assembly works on the vehicle, such as removing the rear wheel, renewal of the final drive chain or similar operations. For this purpose, the motorcycle should be safely jacked up with a suitable motorcycle lifter.
- Since this product is universally applicable without a specific vehicle classification, it is important to make sure that the product can be used / applied with your type of motorcycle without any problems and in an appropriate way, before the first use. Thereby pay attention to the information on your vehicle operating instructions and the vehicle manufacturer's specifications. This is necessary, since an inappropriate use of the product will affect the driving safety and/or the condition of the vehicle.

Please contact our technics centre via the fax number (040) 734 195-58 resp. by email: [technikcenter@louis.de](mailto:technikcenter@louis.de) before using the article for the first time, if you have any questions on the product and/or these instructions. We will be happy to provide you with quick help. In this way, together we guarantee that the product is correctly assembled and used without any problems.