

Chain separating and riveting tool (order no. 10002556)

Dear Customer,

Thank you for buying our product. Please use this instruction in the application of the tool.

The Louis Team wishes you lots of fun.

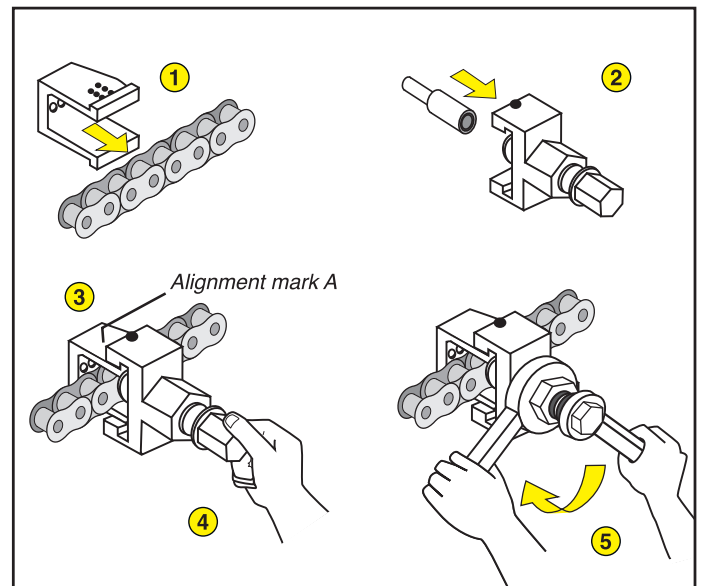
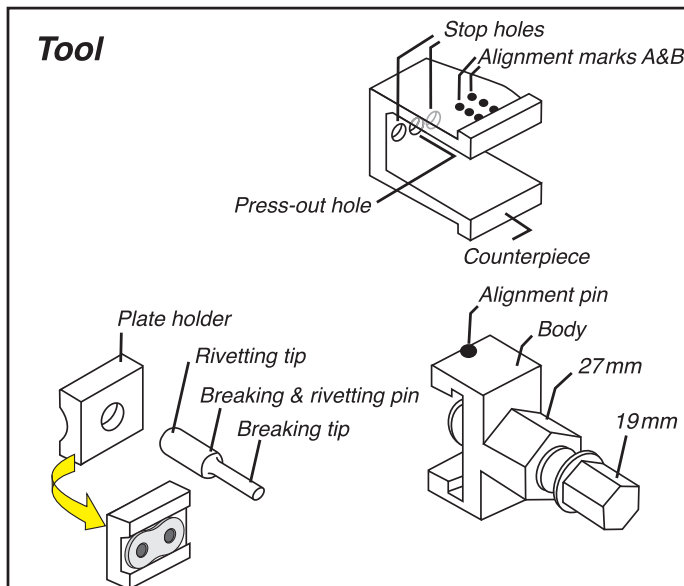
This tool is suitable for separating D.I.D. motorcycle chains with divisions of 520, 525, 530 or 532, using a chain rivet connecting link of the types RJ, FJ, XJ, ZJ or PL. Suitable for riveting D.I.D 525 ZVM-X, 530 ZVM-X, 525 VX and 530 VX chains with a D.I.D connecting link, type ZJ. Appropriate for riveting D.I.D. chains with divisions of 520, 525, 530 and 532 with a D.I.D ZJ type link. Before the assembly, make sure that the chain link fits the respective chain. Each type of chain requires its own identical chain link.

Attention:

Thoroughly read these operating instructions before applying the tool. Please keep in mind that a chain rivet connecting link, which has not been correctly riveted, could loosen while driving the motorbike and lead to a dangerous situation. Should you have the slightest of doubts about your technical skills, assign an authorised service centre with the riveting of the chain. Before the operating procedure, the motorcycle must be safely positioned, since its overturning could lead to personal injury and a damaging of the two-wheeler. Protective glasses must be worn while applying the tool. After the riveting procedure, the chain must still be slightly movable. If the chain is too inflexible, it was too strongly pressed. The chain master link may only be riveted once. Should the link be loosened, a new chain connecting link must be installed.

Separating the chain:

1. Place the "U"-retainer on the chain part to be separated.
2. Insert the separating and riveting bolt into the bolt retainer as shown in figure 2 and twist the bolt retainer, so that the bolt does not protrude too far from the body.
3. Place the body on the "U"-retainer with the chain and adjust the bolt to position A on the "U"-retainer.
4. Manually twist the bolt retainer until the separating and riveting bolt touches the rivet of the chain. Make sure that the separating bolt is placed on the centre of the rivet.
5. Hold the tool with a 27mm ring spanner and press out the rivet with a 19mm ring spanner by twisting the bolt retainer (clockwise).



Please contact our technics centre via the fax number 0049 (0)40-734 195-58 resp. by email: technikcenter@louis.de before using the article for the first time, if you have any questions on the product and/or these instructions. We will be happy to provide you with quick help. In this way, together we guarantee that the product is correctly assembled and used without any problems.

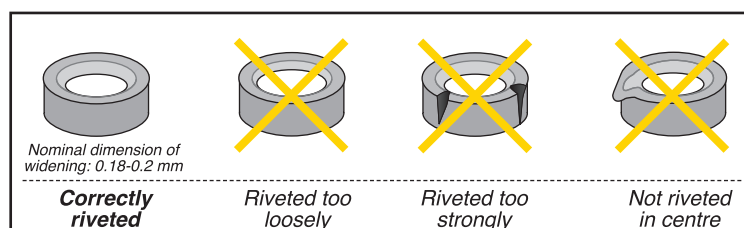
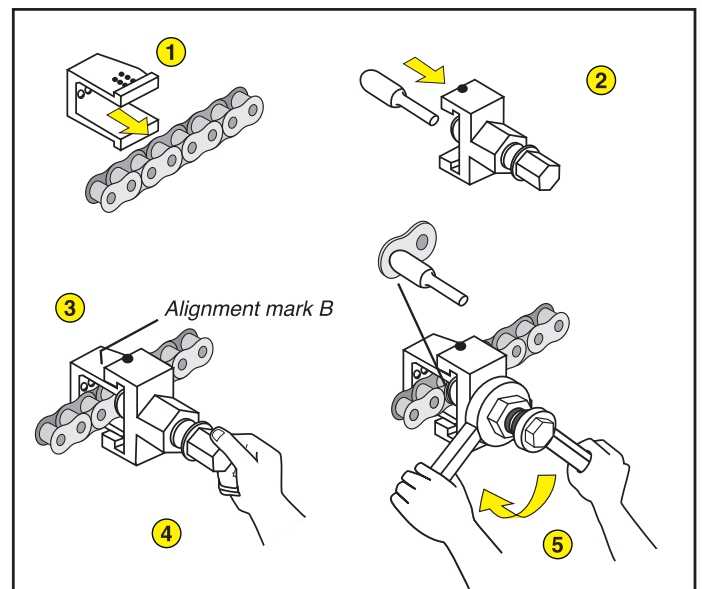
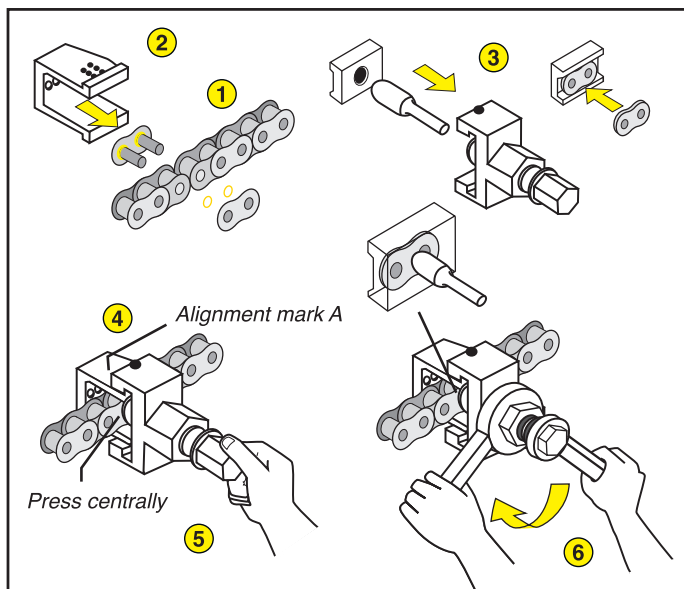
Chain separating and riveting tool (order no. 10002556)

Attaching the connection link back plate

1. Grease the chain link before the assembly. Connect both ends of the chain to the chain link and manually attach the connecting link back plate onto the connecting bolts. Make sure that the 4 O-rings are correctly placed.
2. Position the rivet heads of the connecting part into the rivet holes of the "U"-retainer.
3. Place the plate holder and the separating and riveting bolt into the body as shown in figure 3.
4. Place the body on the "U"-retainer with the chain and adjust the "U"-retainer to position A.
5. Manually twist the bolt retainer until the separating and riveting bolt touches the rivet of the chain. Make sure that the separating bolt is placed on the centre of the rivet.
6. Hold the tool with a 27mm ring spanner and attach the master link backing plate with a 19mm ring spanner by twisting the bolt retainer (clockwise).
7. Remove the tool from the chain.

Riveting

1. Insert the chain into the "U"-retainer as shown in figure 1.
2. Insert the separating and riveting bolt into the bolt retainer as shown in figure 2.
3. Place the chain on the "U"-retainer with the chain and adjust the "U"-retainer into position B.
4. Manually twist the bolt retainer until the separating and riveting bolt touches the rivet of the chain. Make sure that the separating bolt is placed on the centre of the rivet.
5. Hold the tool with a 27mm ring spanner and press the rivet of the connection link with a 19mm ring spanner by twisting the bolt retainer (clockwise).
6. Release the bolt retainer and repeat steps 1 to 5 for the second rivet of the connection link (b).
7. The riveting is perfect if, afterwards, the diameter of the rivet is between 5.68 mm and 5.7 mm.



Please contact our technics centre via the fax number 0049 (0)40-734 195-58 resp. by email: technikcenter@louis.de before using the article for the first time, if you have any questions on the product and/or these instructions. We will be happy to provide you with quick help. In this way, together we guarantee that the product is correctly assembled and used without any problems.